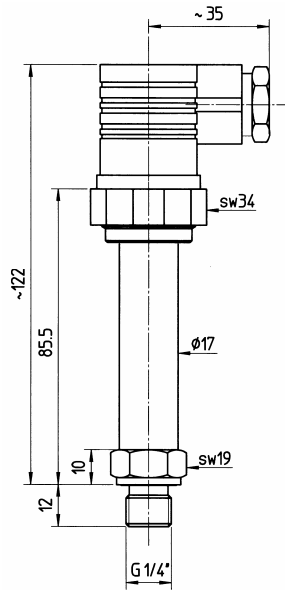
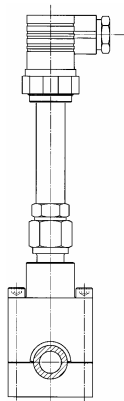


**Pressure Sensor  
DS-1-A-400-1/4"**

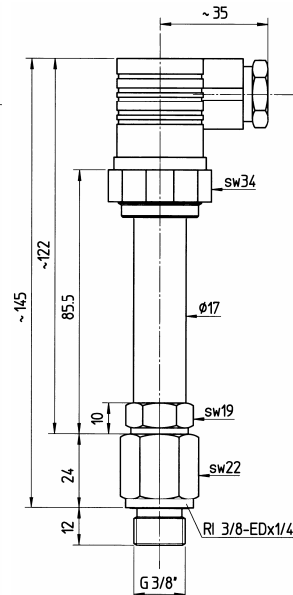


Pressure sensor  
**DS-1-A-400-1/4"**

mounted with serv-Clip 1

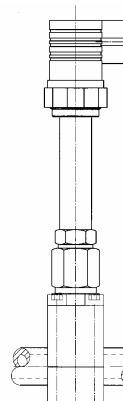
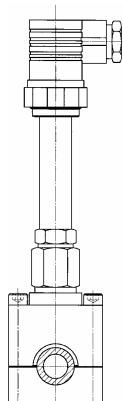
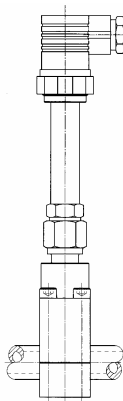


**Pressure Sensor  
DS-1-A-400-3/8"**



Pressure sensor  
**DS-1-A-400-3/8"**

mounted with serv-Clip 2



- ◆ Measurement range 0 ... 400 bar
- ◆ Output 4 ... 20 mA / 2 wires
- ◆ Operating temperature -20 ... 80 °C
- ◆ Protection mode IP 65
- ◆ Right-angle plug connection DIN43650 A
- ◆ Robust stainless steel housing
- ◆ Fully encased sensor element made of stainless steel

**Description**

The piezo-resistive pressure sensor DS-1-A-400- ... was developed for a wide range of general measurement applications in the field of industrial hydraulics. Typical applications include systems and plant engineering, automation, air conditioning, and refrigeration. In addition to its robust and compact design, it stands out by its high accuracy and its extensive measurement range. As a standard, the housing and all parts exposed to the liquid are made of stainless steel (Type 1.4571). The standard connection is G1/4", with soft seals made of Viton.

**Installation with serv-Clip 1**

Before mounting the measurement connector **sc-1...**, the standard measurement coupling is replaced by the pressure sensor.

The patented measuring connector is simply screwed onto the pressurized pipe (after cleaning the pipe surface) without having to interrupt the operation of the system.

Via the screw head, a specially shaped steel needle is pressed through the pipe wall. Afterwards, the screw head is screwed back. The hole created in this way thus becomes open and can be used by the sensor.

**Installation with serv-Clip 2**

The patented measuring connector **sc-2...** was developed for installation on pressureless hydraulic pipes. After installation, the measuring connection can continuously be used, supporting operating pressures of up to 630 bar.

The measuring connection **sc-2...** comes pre-mounted, including measurement coupling and needle. By screwing the measurement coupling onto the pipe, a specially shaped needle is pressed through the pipe wall. Afterwards the measurement coupling is unscrewed again.

In the next step, the temperature sensor is screwed into the **serv-Clip** using a RI3/8-EDx1/4. The measuring connection is completely tight and is ready for continuous use.

Using the **serv-Clips sc-1...** and **sc-2...**, the pressure sensor can be installed easily, quickly and safely even by non-technical staff. The whole process takes a few minutes only. No special tools are required for the installation of the **serv-Clips**.

The system is completely tight, preventing any contamination of the hydraulic oil and ensuring sustained operational safety. The measuring connections are continuously available for measurement applications.

**Specifications**

Pressure range	0 ... 400 bar, against 1 bar
Overpressure	600 bar
Output signal	4 ... 20 mA
Power supply	8 ... 28 V DC
Power consumption	Max. 25 mA
Configuration	2 wires
Protection mode	IP 65
Accuracy (Linearity+Repeatability+ Hysteresis )	+/- 0.5%
Operating temperature	-20 ... 80 °C
Linearity	0.2% typ. / max. 0.5%
Pressure connection	G1/4" male / G3/8" male